



ALLAN
MYERS



2023 SITE SPECIFIC HAZARD AWARENESS TRAINING

Welcome to our Mine Site

- As we continue to value your business and services, we also value your personal safety and the safety of those around you, both on and off our sites
- Please take the time to complete our Site-Specific Hazard Awareness Training and complete the assessment following. It is Allan Myers policy this training be conducted annually. *False certification is punishable under section 110 (a) and (f) of the Federal Mine Safety and Health Act*
- Completing this training will help the Allan Myers team to ensure that everyone makes it Home Safe Tonight and comply with federally mandated regulations of the Mine Safety & Health Administration (MSHA)



Home Safe Tonight and What it Means to Us

- Our Home Safe Tonight mission is a people-centric approach that encompasses training, onsite safety, and wellness programs in order to assure EVERYONE on our sites leave, the same way they arrived
- At Allan Myers we care enough to step up, stop work that could be dangerous, and make a difference
- This culture has been achieved because of care, concern, and a personal commitment to sending you HOME SAFE TONIGHT



In compliance with standards set forth by the Mine Safety and Health Administration, Allan Myers is dedicated to providing our valued customers and employees with the proper Site-Specific Hazard Awareness Training, to help ensure you reach HOME SAFE TONIGHT.

NOTE: Any persons found on the property without this training, or those individuals who do not comply with these site guidelines will be asked to leave the property until either the training has been completed, or the guidelines spelled out have been followed. Each person proceeding onto Allan Myers mine property is subject to MSHA regulations. Any MSHA violation committed by any person (not employed by Allan Myers) is subject to an MSHA violation being issued. These offenses are at the liability of the person (not employed by Allan Myers) committing the act and not Allan Myers. Any questions for compliance of these guidelines should be directed at site management and/or the safety department.

MSHA 30 CFR 46.11 - Site-Specific Hazard Awareness Training.

- (a) You must provide site-specific hazard awareness training before any person specified under this section is exposed to mine hazards.
- (b) You must provide site-specific hazard awareness training, as appropriate, to any person who is not a miner as defined by § 46.2 of this part but is present at a mine site, including:
 - (1) Office or staff personnel;
 - (2) Scientific workers;
 - (3) Delivery workers;
 - (4) Customers, including commercial over-the-road truck drivers;
 - (5) Construction workers or employees of independent contractors who are not miners under § 46.2 of this part;
 - (6) Maintenance or service workers who do not work at the mine site for frequent or extended periods; and
 - (7) Vendors or visitors.
- (c) You must provide miners, such as drillers or blasters, who move from one mine to another mine while remaining employed by the same production-operator or independent contractor with site-specific hazard awareness training for each mine.
- (d) Site-specific hazard awareness training is information or instructions on the hazards a person could be exposed to while at the mine, as well as applicable emergency procedures. The training must address site-specific health and safety risks, such as unique geologic or environmental conditions, recognition and avoidance of hazards such as electrical and powered-haulage hazards, traffic patterns and control, and restricted areas; and warning and evacuation signals, evacuation and emergency procedures, or other special safety procedures.
- (e) You may provide site-specific hazard awareness training through the use of written hazard warnings, oral instruction, signs and posted warnings, walk around training, or other appropriate means that alert persons to site-specific hazards at the mine.
- (f) Site-specific hazard awareness training is not required for any person who is accompanied at all times by an experienced miner who is familiar with hazards specific to the mine site.



Scale House(s)

- All persons must have Site Specific Hazard Training before proceeding onto mine property
- All visitors must sign in and out when entering and leaving the property
- A CB radio is required for entering the site to be loaded (temporary radios may be used on a site-by-site basis). If you enter the site without a CB radio, you may be denied. Refer to signs posted throughout the quarry for the observed CB channel
- In case of emergency, contact the scale house right away via CB radio or phone
- First Aid/CPR/AED trained employees are on site. First aid equipment and AED are at various locations, contact site management immediately in the event of an emergency. See map(s) for location of first aid/AED at each site



General Procedures

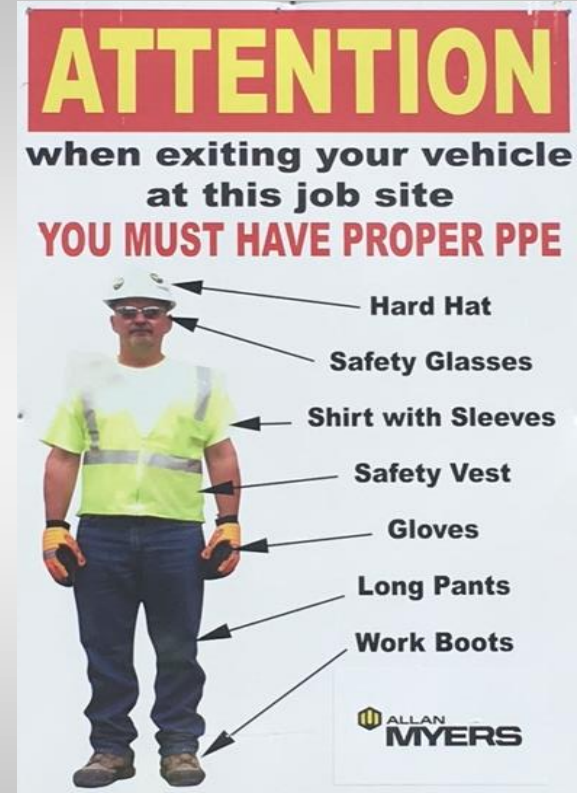
- Drug and/or alcohol consumption, or suspicion of the use of either while on site, is not permitted. If suspected, you will be asked to leave the site
- All trash must be disposed of in the trash cans provided on site. If you are caught littering, you will be asked to leave the site
- Any released petrochemical fluids (hydraulic oil, motor oil, fuel etc.) **MUST** be reported to the scale house immediately
- Please report all near misses, accidents, and injuries to the Scale House IMMEDIATELY
- No photos or videos are authorized of any equipment or persons on site



Minimal Required Personal Protection Equipment (PPE)

All persons while on site are required to wear:

- Work Clothes (long pants and shirt with minimum 4" sleeves)
- Work Shoes (Steel/ Composite Toed Boots)
- Hard Hat
- Gloves
- Safety Glasses (and/or) prescription safety glasses w/ side shields
- Safety Vest
- And as necessary or designated other PPE such as hearing protection, respiratory protection, and fall protection.



Traveling on Site(s)



- Before moving, all operators shall sound an audible warning to alert persons in the area. A 360° walk-around is recommended. All vehicles entering the mine site are required to have a pre-operational check conducted (MSHA). These checks are to be conducted by the operator and non-functioning items are subject to violation of the vehicle operator (i.e., back-up alarms, horns, wipers, lights, mirrors, parking brakes, service brakes, etc.)
- Seatbelts are always required, and the posted speed limit must be followed
- Follow and adhere to all traffic signage on the property. The traffic pattern around the quarry is right-handed traffic unless otherwise posted. **NOTE:** The pattern may change when entering any one of Allan Myers pits, refer to signage for safe travel
- Maintain a safe following distance of all vehicles. When in our pit(s), maintain a minimum of 200 feet distance between vehicles. Anyone operating a motor vehicle must yield to quarry equipment



Loading and Securement of Loads

- For your safety, truck drivers must remain in their trucks while being loaded. If you must exit your truck after being loaded, refer to company policy requiring the proper PPE. Any cleaning of the inside of your truck body **MUST** be done off site
- All loads are to be secured before leaving the quarry and dump bodies lowered before traveling. Do not climb on truck bodies and use the provided tarp racks. A fall hazard exists where persons do not use the provided tarp racks
- Cab shields are required for loading of any material. No material will be loaded into pick-up trucks or pick-up trucks with trailers
- Do not position oneself between truck body and tailgate or truck frame, without proper blocking against motion
- NEVER move truck with the dump body elevated in the air, body should be secure in driving fashion prior to traveling
- Allan Myers Materials does not tow equipment. If you become stuck while operating on site, you will be required to call a towing/wrecking company to remove your vehicle. See site management or scale house for a local towing company



Maintenance Activities



- All unauthorized personnel are to stay out of processing areas (plant). Equipment may remotely and suddenly start. Admittance into these areas is granted only by site management
- All unauthorized persons must stay away from electric wires, transformers, control rooms, and other electrical components unless otherwise given permission by site management. Stay 20 feet away from any power lines
- Equipment must be locked and tagged prior to the start of any maintenance work. More information can be found attached to the breaker box(es)
- When working near water's edge, life jackets are required to be worn at all times



Ground Control on Site(s)



- All persons on foot must stay 15 feet away from an un-barricaded/un-bermed high wall edge, and half the high wall height away of the base while on foot. Any person(s) within 15 feet of an un-barricaded/un-bermed high wall edge is required to wear fall protection because of the fall from heights hazard
- Signage will also be posted to alert visitors on the day of the blast. If you have any questions, regarding mustering points or blast signals, please contact site management



Location Specific Information – Cedar Hill Quarry

- Be sure to follow the speed limit 15 MPH throughout the facility, except from the secondary plant to the scale house where it is 10 MPH.
- Traffic pattern is right-handed unless otherwise posted.
- Please pay close attention to radio channels and keep your VOLUME up.
- First Aid/CPR trained employees on site. First aid supplies are located in the shop and scale house. AED is located in the office trailer-mounted on wall.
- In case of emergency contact the scale house RIGHT AWAY CB channel 22 - Phone: 717 548 2191.
- Blast Notification: NO unauthorized personnel allowed in the quarry during blasting procedures. A horn will sound 3 times five minutes prior to the blast, 3 times one minute prior, and then once for “all clear” after the blast.

Scale House: CB Channel 22

Yard Loaders: CB Channel 13



Location Specific Information – Devault Quarry

- Be sure to follow the speed limit 15 MPH throughout the facility.
- Traffic pattern is Right-Handed throughout the entire quarry.
- Please pay close attention to radio channels and keep your VOLUME up.
- Follow and adhere to ALL signage on the property.
- First Aid/CPR trained employees on site. First Aid supplies and AED is located in the office trailer.
- In case of an emergency contact the scale house immediately CB channel 8 – Phone: 610.296.1793.
- Blast Notification: No unauthorized personnel allowed in quarry during blasting procedures. A horn will sound 5 min prior to the blast. 3 short signals one minute before the blast. One “all clear” signal after.
- CLEAN FILL: Follow signs to dump area and communicate with loader operator via CB 14.

Scale House: CB Channel 8

Equipment Operators: CB Channel 14



MAP LEGEND

2 Way Traffic
Plant Area/ Caution
One Way Traffic

CB CHANNEL 8 FOR SCALEHOUSE
CB CHANNEL 14 FOR EQUIPMENT
OPERATORS

LOCATED IN SCALEHOUSE:



Location Specific Information –

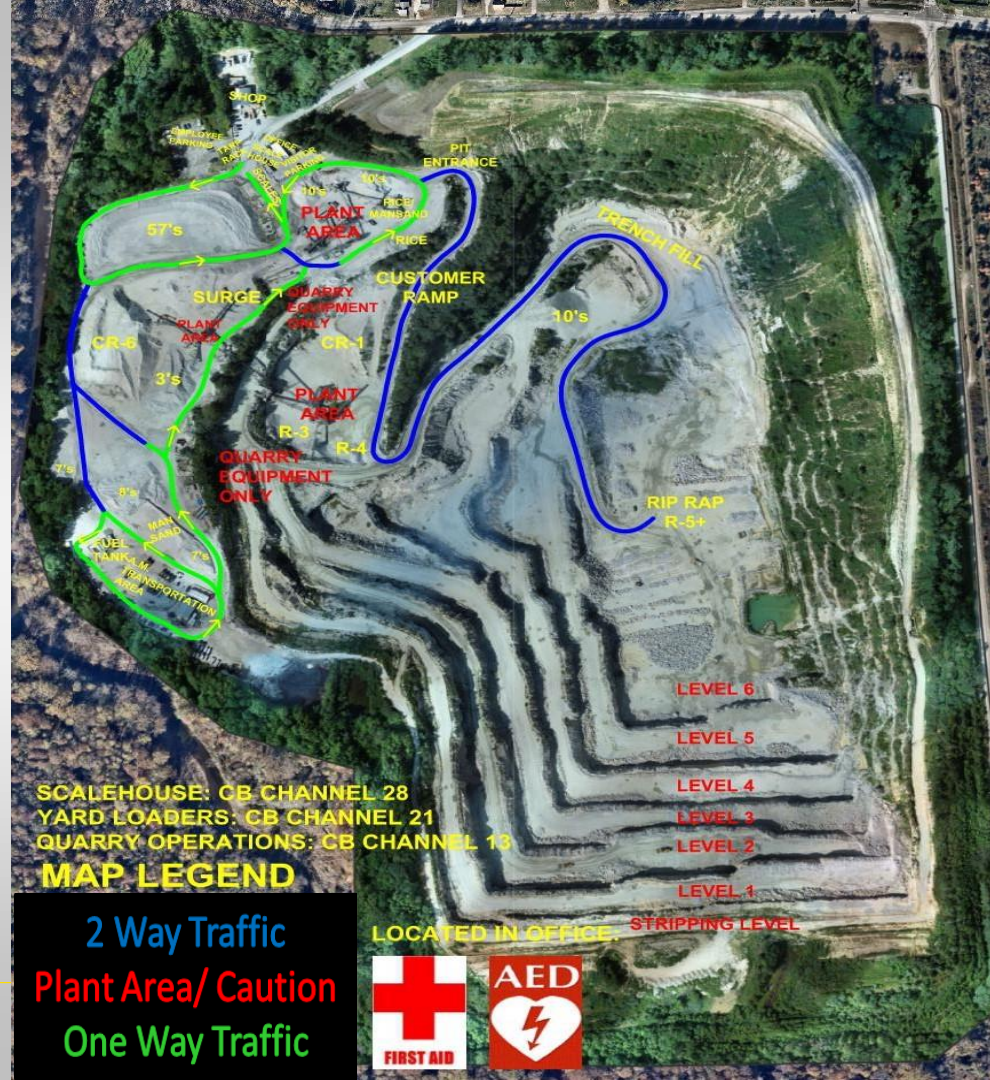
Elk Mills Quarry

- Be sure to follow the SPEED LIMIT 10 MPH throughout the facility.
- Traffic around the quarry is right hand travel unless otherwise posted. Traffic does change from right to left hand travel at the bottom of the customer truck ramp going into the pit.
- Please pay close attention to radio channels and keep your VOLUME up.
- Follow and adhere to ALL signage on the property.
- First Aid/CPR trained employees on site. First aid supplies are located in the scale house. AED is in the office next to the scale house.
- In case of emergency contact the scale house right away via CB Ch. 28 – Phone: 410.398.1430.
- Blast Notification: No unauthorized personnel shall be in the quarry during blasting procedures. A horn will sound once 15 minutes prior to the blast. Once 1 material prior to the blast, and one “all clear.”

Scale House: CB Channel 28

Yard Loaders: CB Channel 21

Pit Operations: CB Channel 13



Location Specific Information –

Paradise Quarry

- Be sure to follow the speed limit 15 MPH throughout the site.
- Traffic pattern is Right-handed unless otherwise posted NOTE: Traffic changes to Left hand entering the pit.
- Please pay close attention to radio channels and keep your VOLUME up.
- Follow and adhere to ALL signage on the property.
- First Aid/CPR trained employees on site. First Aid supplies are located in scale house. AED in office.
- In case of an emergency contact the scale house RIGHT AWAY via CB 13 - Phone: 717.442.4191.
- Blast Notification: No unauthorized personnel are allowed to be in the quarry during blasting procedures. A horn will sound 3 times five minutes prior to the blast, again 1 minute prior to the blast, and at all clear after the blast.

Scale House: CB Channel 13

Yard Loaders: CB Channel 2

Quarry Operations: CB Channel 5



MAP LEGEND

2 Way Traffic
Plant Area/ Caution
One Way Traffic

LOCATED IN SCALEHOUSE:



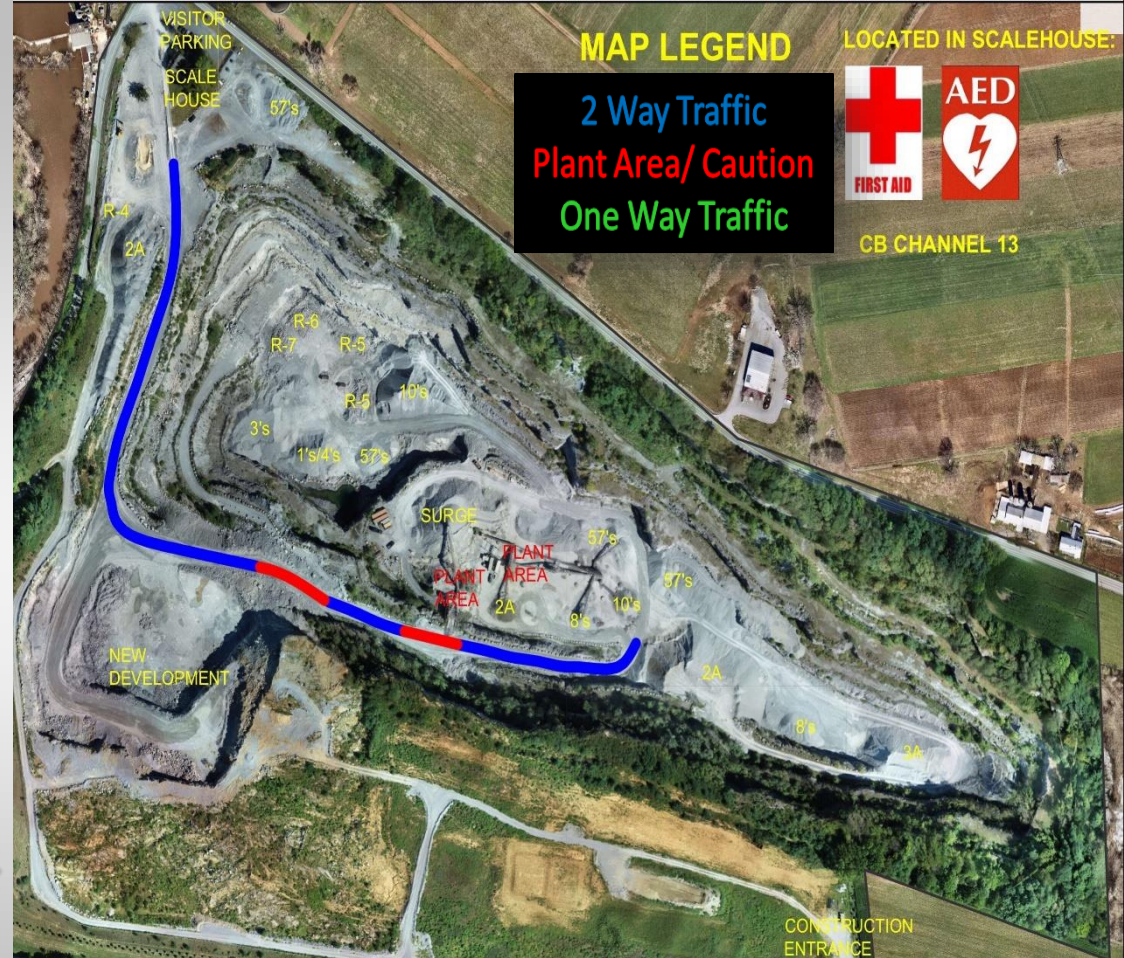
CB CHANNEL 2 FOR SCALE/LOADERS
CB CHANNEL 5 FOR QUARRY
OPERATIONS

Location Specific Information – Talmage Quarry

- Be sure to follow the speed limit 15 MPH throughout the site.
- Traffic Pattern around the quarry is right-handed unless otherwise posted.
- Follow and adhere to ALL signage on the property.
- First Aid/CPR trained employees on site. First aid and AED are located in the shop and scale house.
- Scale house communicates via CB Channel 13.
- Immediately report all emergencies to the scale house via CB 13. Phone: 717.656.2411
- Blast Notification: No unauthorized personnel permitted in the quarry during blast procedures. A horn will sound 3 times five minutes prior to the blast, 3 times one minute prior, one time “all clear.”



All Communications: CB Channel 13





See the Weighmaster at any
Allan Myers Aggregate site to
receive your 2023 Helmet
Sticker to signify you have
completed this training

